



ELLINGTON
PROPERTIES

MERÇER HOUSE

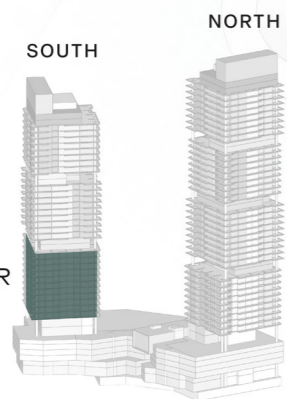
SOUTH TOWER
FLOOR PLAN

MERÇER HOUSE



3RD - 13TH FLOOR TYPICAL PLAN

-  STUDIO
-  1 BEDROOM
-  2 BEDROOM
-  3 BEDROOM

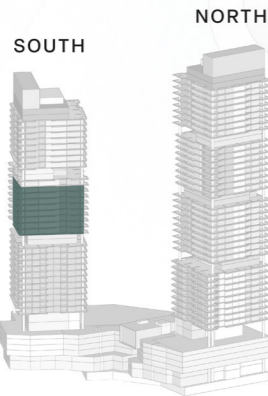


MERÇER HOUSE



15TH - 22ND FLOOR TYPICAL PLAN

-  1 BEDROOM
-  2 BEDROOM
-  3 BEDROOM



15TH - 22ND FLOOR

NORTH

SOUTH

SOUTH

1 BR
TYPE A
03

2 BR
TYPE B
01

2-BR+S
TYPE A
02

3-BR+S
TYPE B
09

2 BR
TYPE A
04

1 BR
TYPE A
08

1 BR
TYPE B
05

2 BR+S
TYPE A
07

1 BR
TYPE B
06

MERÇER HOUSE



23RD FLOOR TYPICAL PLAN

-  1 BEDROOM
-  2 BEDROOM
-  3 BEDROOM



23RD FLOOR

SOUTH

NORTH

SOUTH

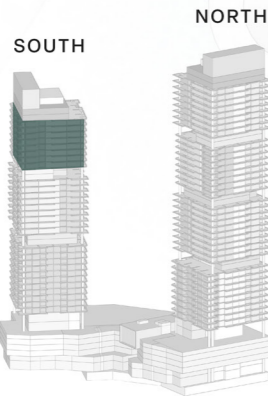


MERÇER HOUSE



25TH - 32ND FLOOR TYPICAL PLAN

-  1 BEDROOM
-  2 BEDROOM
-  3 BEDROOM



25TH - 32ND FLOOR

NORTH

SOUTH

SOUTH

1 BR
TYPE A
02

2 BR
TYPE A
03

3 BR
TYPE B
01

2 BR
TYPE A
08

1 BR
TYPE A
07

2 BR
TYPE A
06

1 BR
TYPE B
05

2 BR
TYPE B
09

1 BR
TYPE B
04

2 BR
TYPE A
03

MERÇER HOUSE

33RD FLOOR TYPICAL PLAN

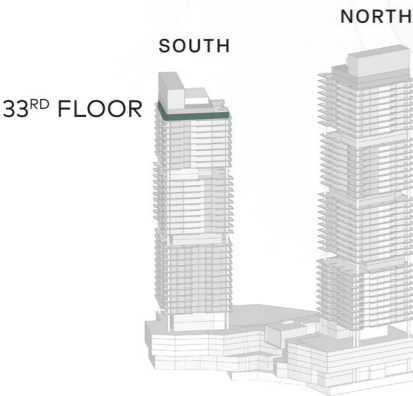
 4 BEDROOM
PENTHOUSE
DUPLEX LOWER LEVEL

4 BR
PENTHOUSE
LOWER LEVEL
01

4 BR
PENTHOUSE
LOWER LEVEL
02



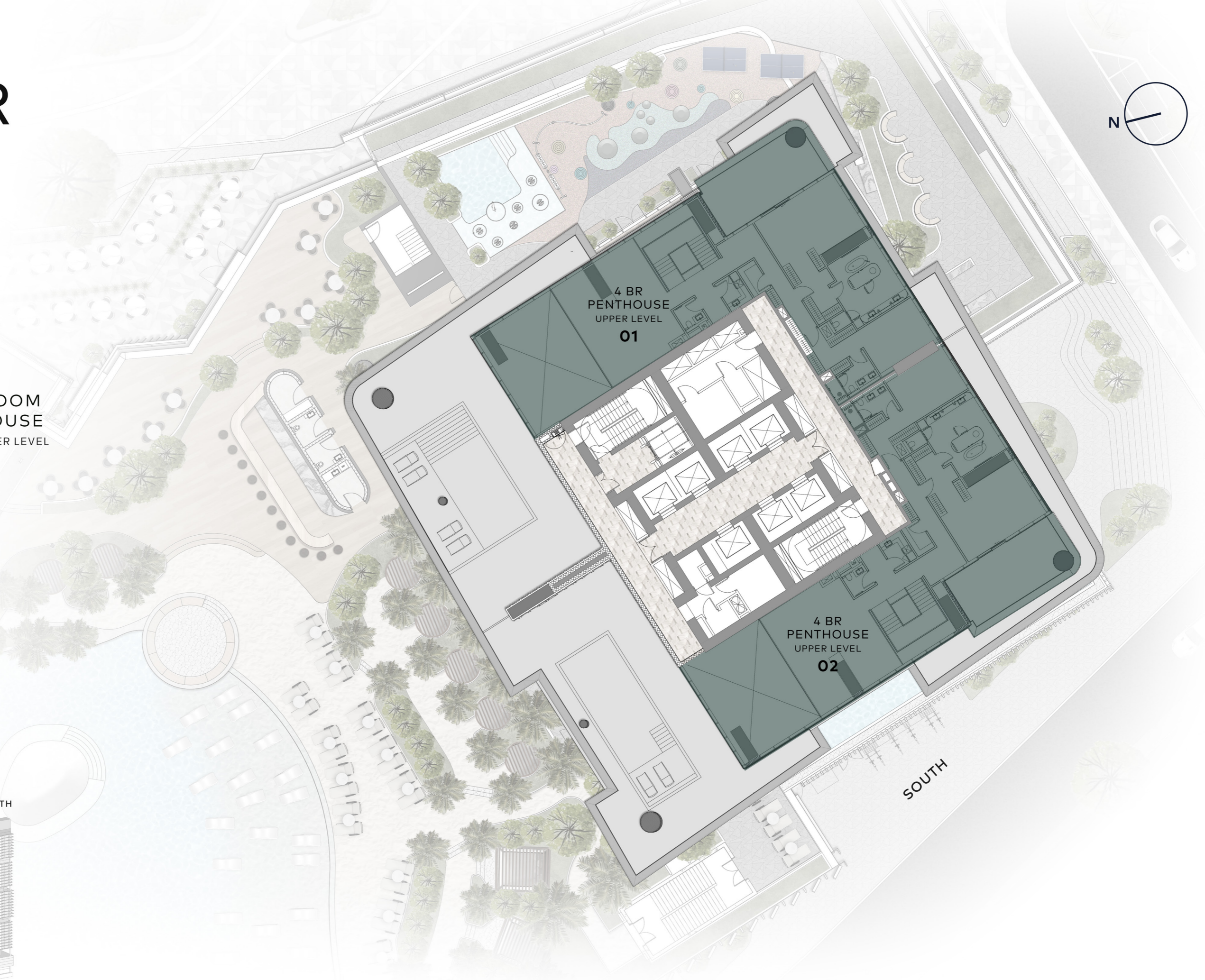
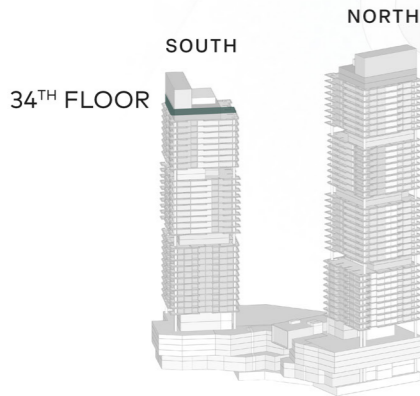
SOUTH



MERÇER HOUSE

34TH FLOOR TYPICAL PLAN

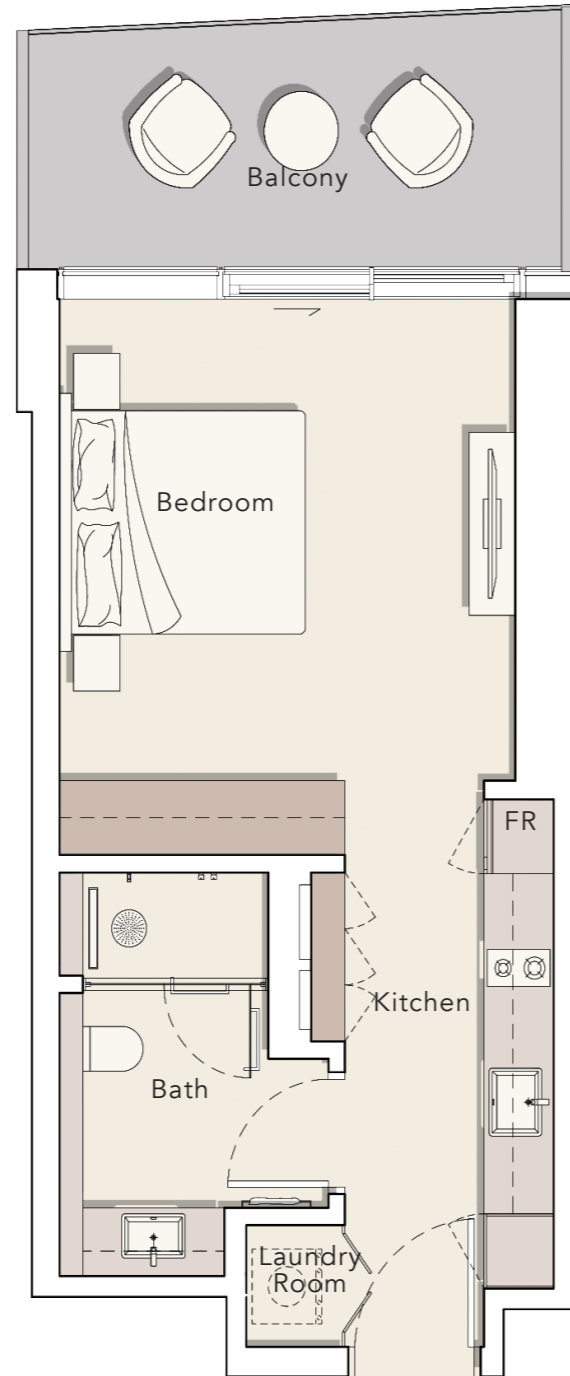
 4 BEDROOM
PENTHOUSE
DUPLEX UPPER LEVEL



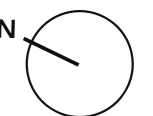
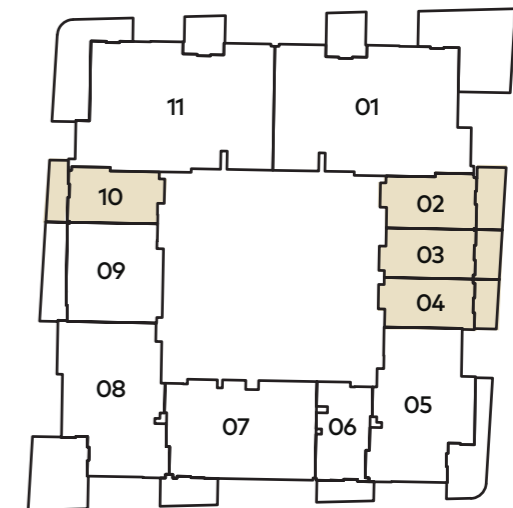
STUDIO

TYPE A

Internal Living Area : 408.06 Sq. Ft
Outdoor Living Area : 105.81 Sq. Ft
Total Living Area : 513.87 Sq. Ft



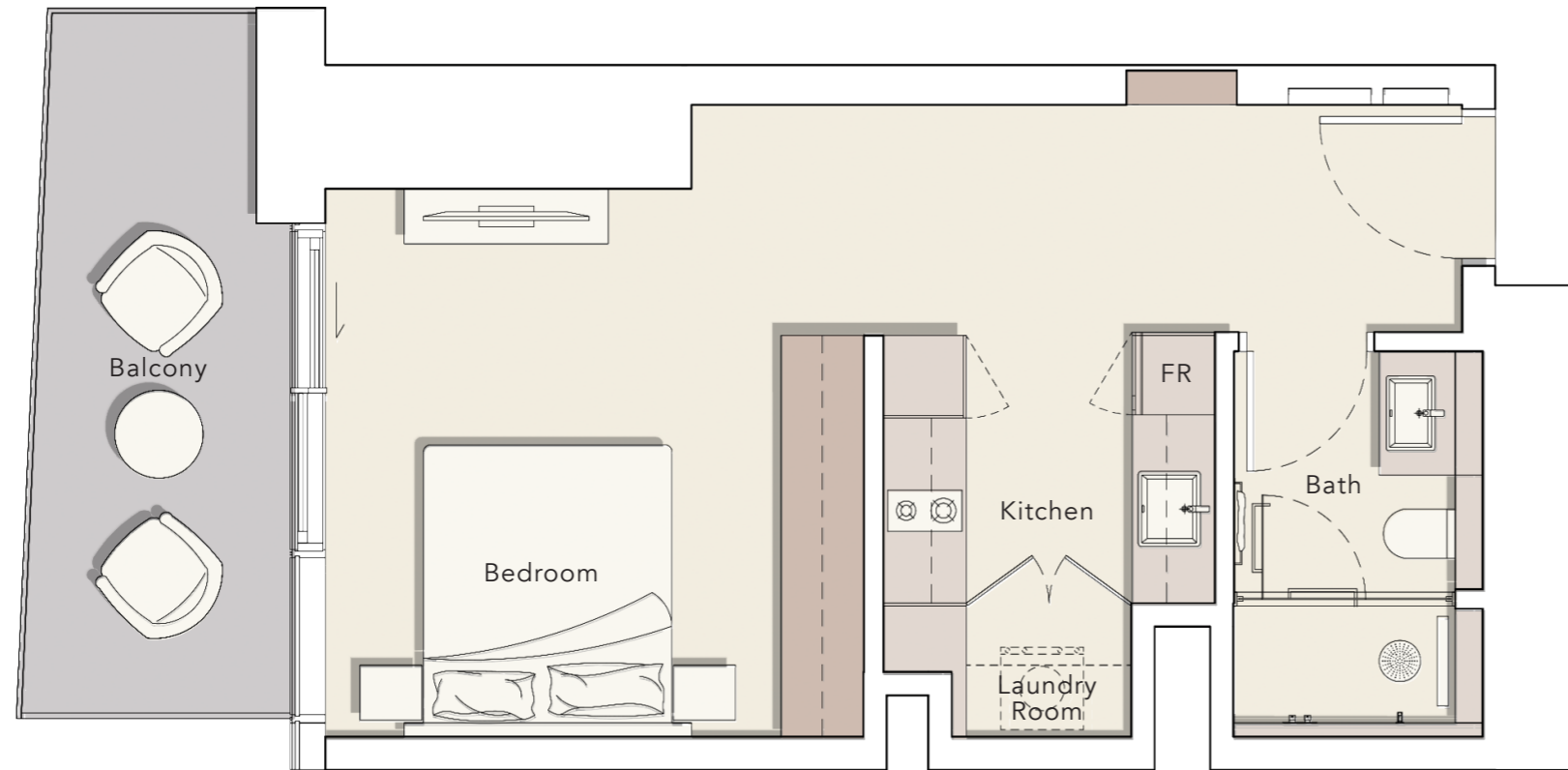
3rd - 13th FLOOR



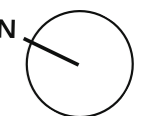
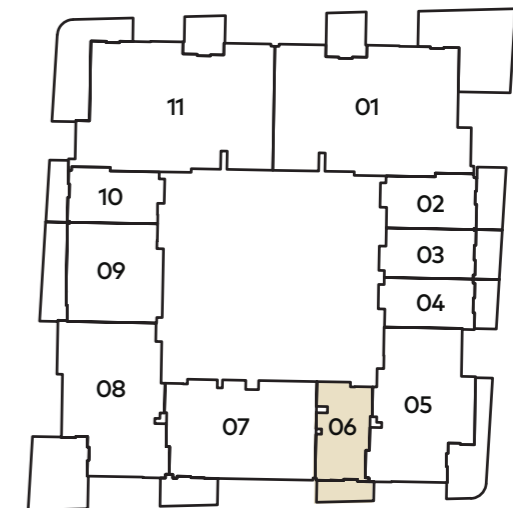
STUDIO

TYPE B

Internal Living Area : 446.81 Sq. Ft
Outdoor Living Area : 110.44 Sq. Ft
Total Living Area : 557.25 Sq. Ft



3rd - 13th FLOOR



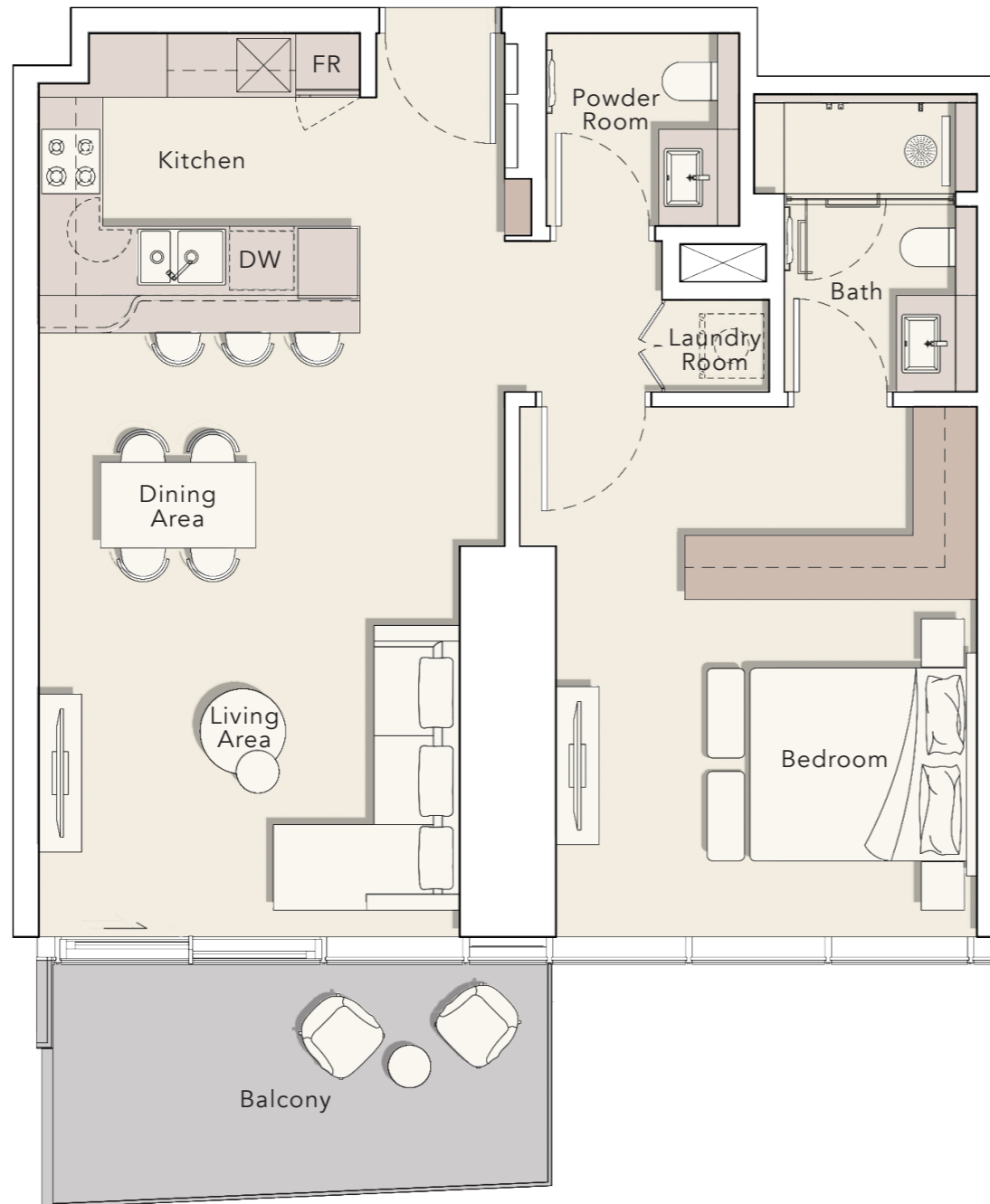
1 BEDROOM

TYPE A

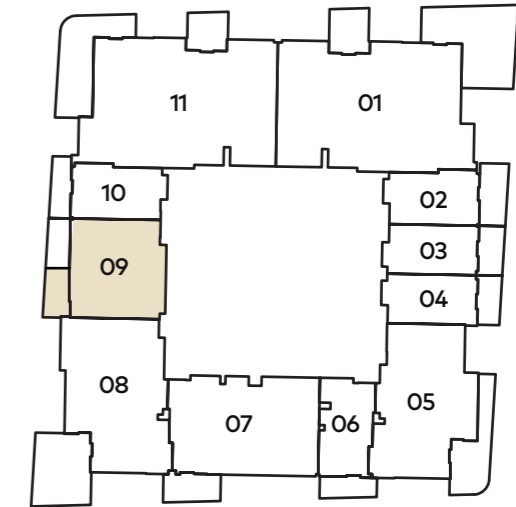
Internal Living Area : 824.41 Sq. Ft

Outdoor Living Area : 115.28 Sq. Ft

Total Living Area : 939.69 Sq. Ft



3rd - 13th FLOOR



3rd - 13th FLOOR

309

15th - 22nd FLOOR

1503

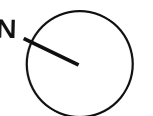
23th FLOOR

2303

25th - 32nd FLOOR

2502

2507



1 B E D R O O M

T Y P E B

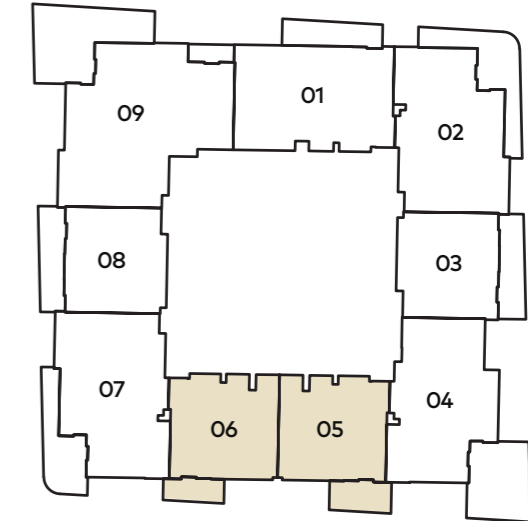
Internal Living Area : 862.08 Sq. Ft

Outdoor Living Area : 109.36 Sq. Ft

Total Living Area : 971.44 Sq. Ft



15th - 22nd FLOOR



15th - 22nd FLOOR

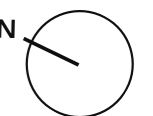
1505
1506

23th FLOOR

2305
2306

25th - 32nd FLOOR

2504
2505



2 BEDROOM

TYPE A

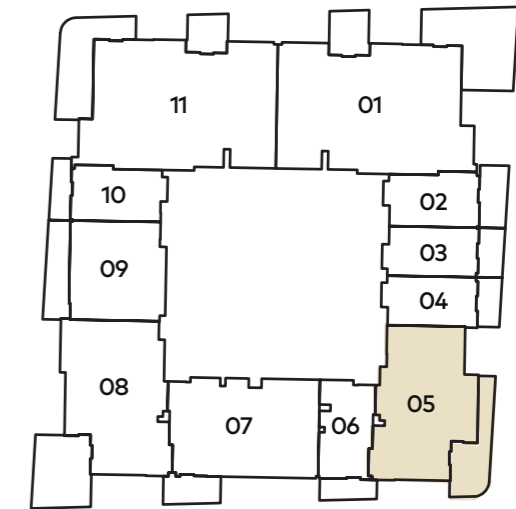
Internal Living Area : 1221.27 Sq. Ft

Outdoor Living Area : 273.94 Sq. Ft

Total Living Area : 1495.21 Sq. Ft



3rd - 13th FLOOR



3rd - 13th FLOOR

305

15th - 22nd FLOOR

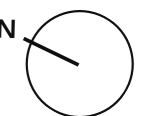
1504

23th FLOOR

2304

25th - 32nd FLOOR

2503



2 BEDROOM

TYPE B

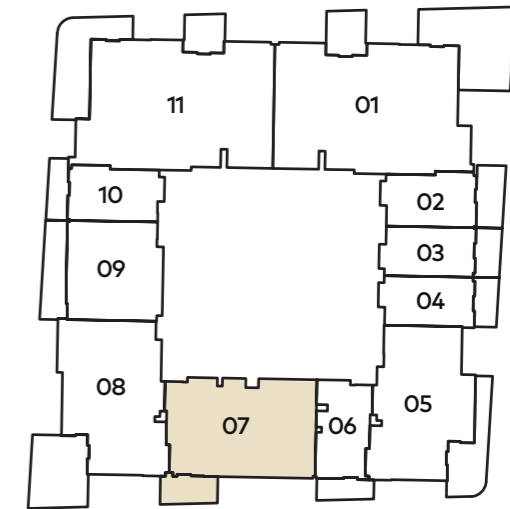
Internal Living Area : 1278.11 Sq. Ft

Outdoor Living Area : 97.09 Sq. Ft

Total Living Area : 1375.20 Sq. Ft



3rd - 13th FLOOR



3rd - 13th FLOOR

307

15th - 22nd FLOOR

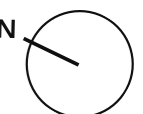
1501

23th FLOOR

2301

25th - 32nd FLOOR

2509



2 BEDROOM + S

TYPE A

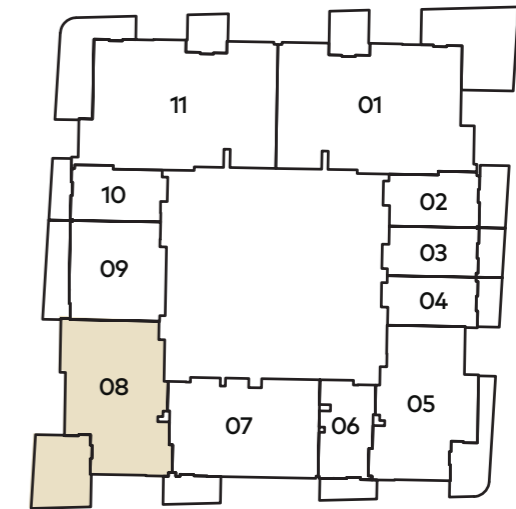
Internal Living Area : 1329.45 Sq. Ft

Outdoor Living Area : 260.49 Sq. Ft

Total Living Area : 1589.94 Sq. Ft



3rd - 13th FLOOR



3rd - 13th FLOOR

308

15th - 22nd FLOOR

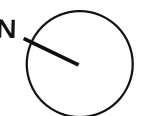
1502
1507

23th FLOOR

2302
2307

25th - 32nd FLOOR

2506
2508



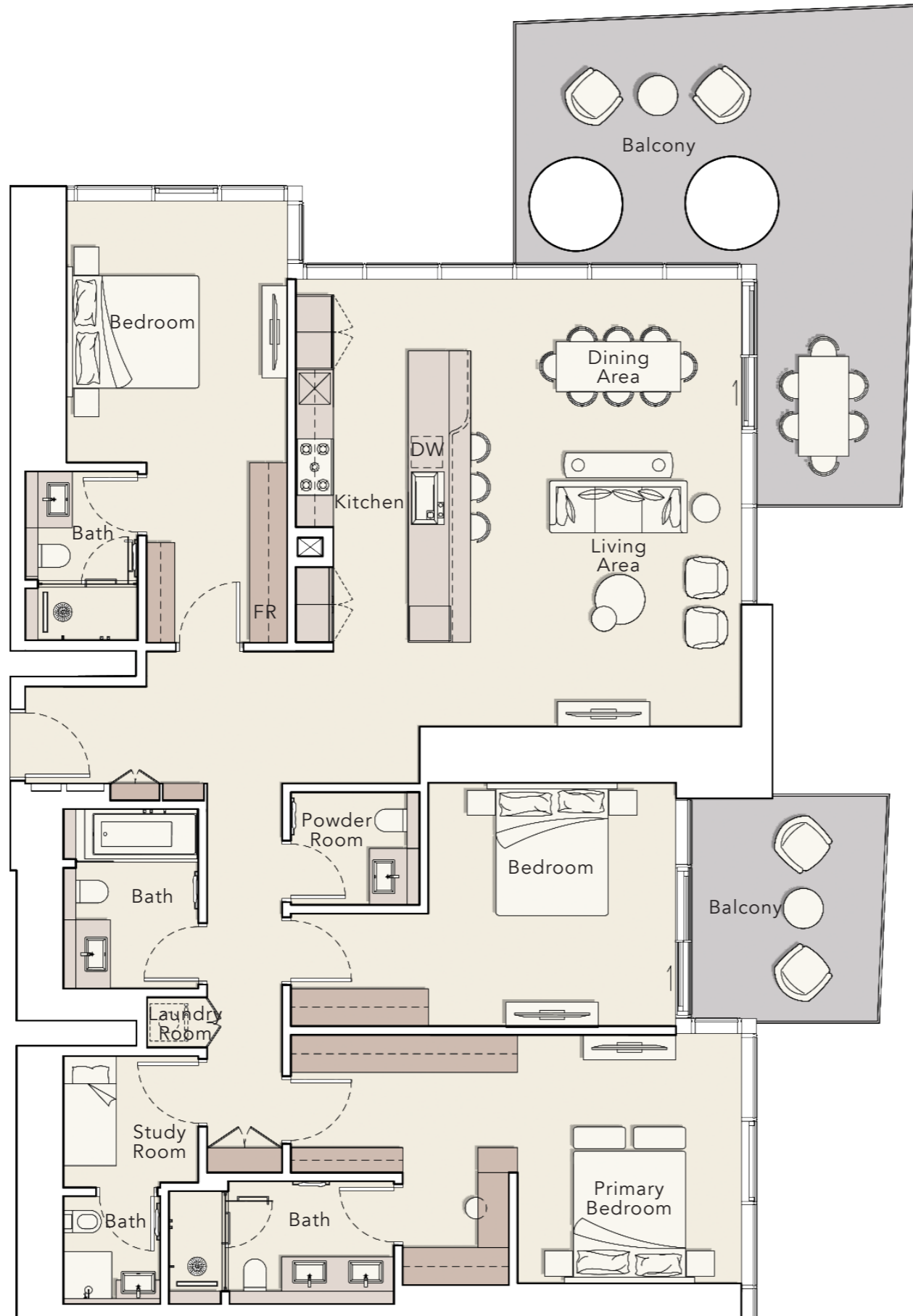
3 BEDROOM + S

TYPE A

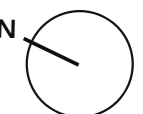
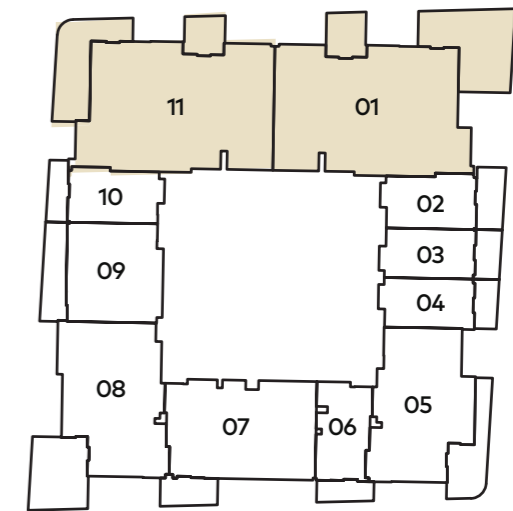
Internal Living Area : 2070.22 Sq. Ft

Outdoor Living Area : 506.98 Sq. Ft

Total Living Area : 2577.20 Sq. Ft



3rd - 13th FLOOR



3 BEDROOM + S

TYPE B

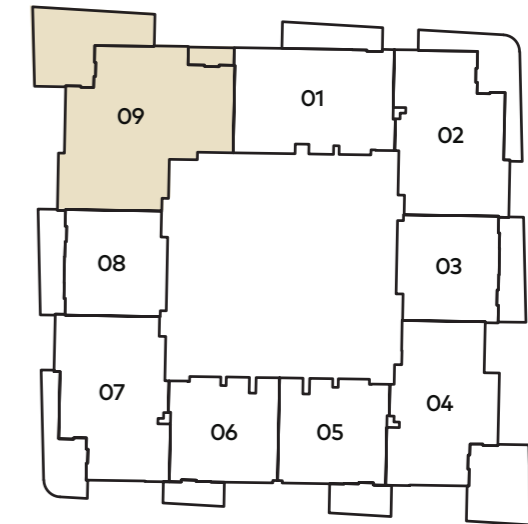
Internal Living Area : 1740.74 Sq. Ft

Outdoor Living Area : 394.39 Sq. Ft

Total Living Area : 2135.13 Sq. Ft



15th - 22nd FLOOR



15th - 22nd FLOOR

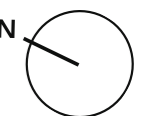
1509

23th FLOOR

2309

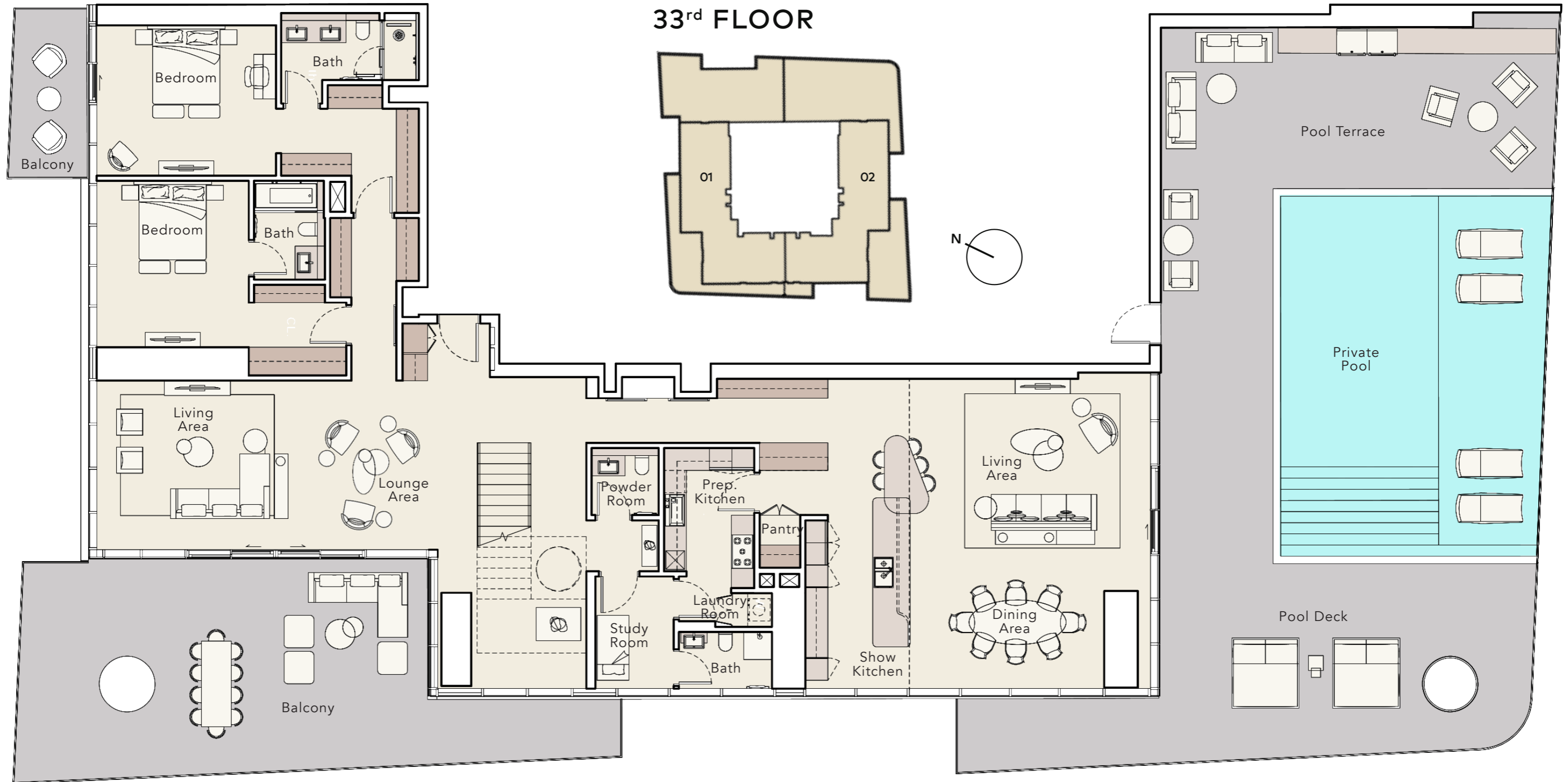
25th - 32nd FLOOR

2501



PENTHOUSE

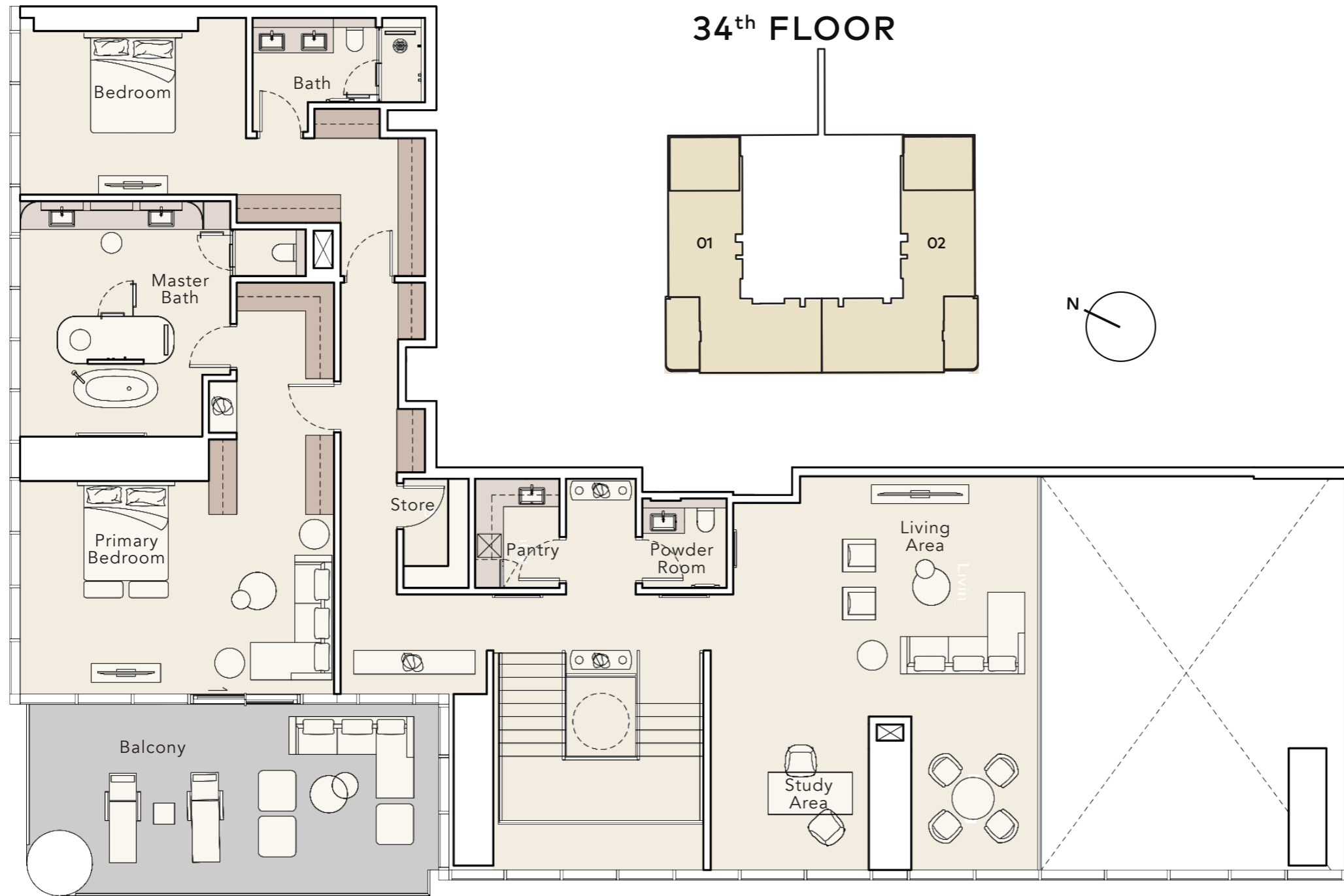
DUPLEX LOWER LEVEL



Internal Living Area : **5903.68 Sq. Ft**
 Outdoor Living Area : **3552.20 Sq. Ft**
 Total Living Area : **9455.88 Sq. Ft**

PENTHOUSE

DUPLEX UPPER LEVEL



Internal Living Area : **5903.68 Sq. Ft**
Outdoor Living Area : **3552.20 Sq. Ft**
Total Living Area : **9455.88 Sq. Ft**

MERČER

HOUSE

800 8288
info@ellingtongroup.com

ELLINGTONPROPERTIES.AE

The renderings and visualizations contained in this brochure are provided for illustrative and marketing purposes. While the information provided is believed to be accurate and reliable at the time of printing, only the information contained in the final Sales and Purchase Agreement will have any legal effect.